

Date —  
28.09.23

Project —  
22.012

# WOLLONDILLY COMMUNITY CIVIC & CULTURAL PRECINCT

## VILLAGE GREEN + PUBLIC REALM

Landscape + Public Realm  
Schematic Design

*Amended September 2023*

oxigen



# CONTENTS

---

## **01. Sitewide Plans**

Precinct Plan

Siteworks Plan

Precinct Plan - Site Context

Site Platforms - Levels & Grading

Site Services Access

Pedestrian Movement

---

## **02. Detailed Plans Public Realm**

Civic Forecourt

Village Green & Civic Place

Civic Links

Streetscape - Corbett Lane & Colden Street

Children's Services

Roofdecks

---

## **03. Public Realm Details**

Public Realm Character

Paving & Surfaces

Furniture

Planting

Lighting Plan

Cultural Layers

Public Art

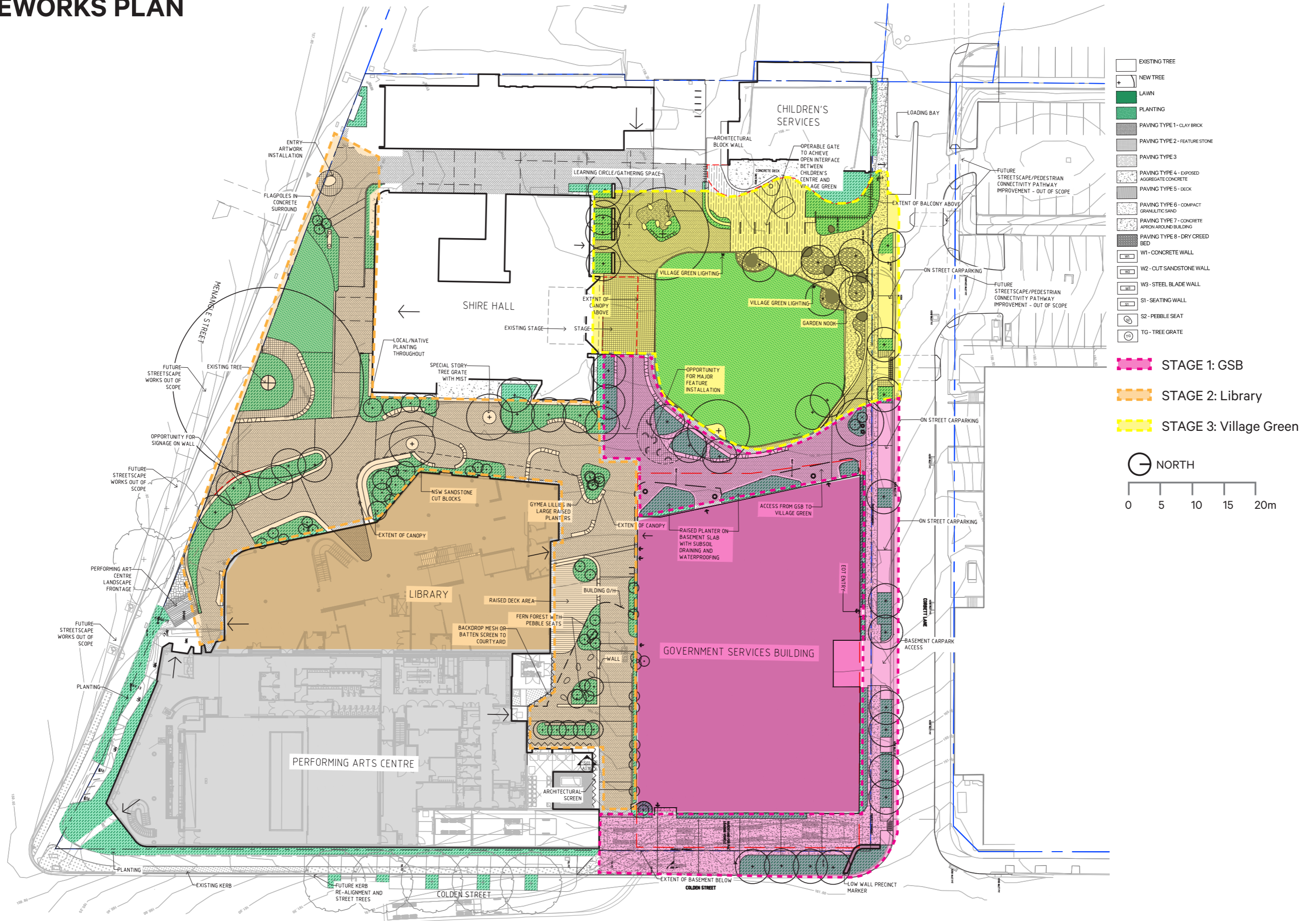
---

# PRECINCT PLAN





# SITWORKS PLAN





# PRECINCT PLAN - SITE CONTEXT OVERLAY





# SITE 'PLATFORMS' LEVELS & GRADING



## KEY

-  Ramp Walkways (max 1:20)
-  Steps

SCALE 10m  NORTH



# SITE SERVICE ACCESS



## KEY

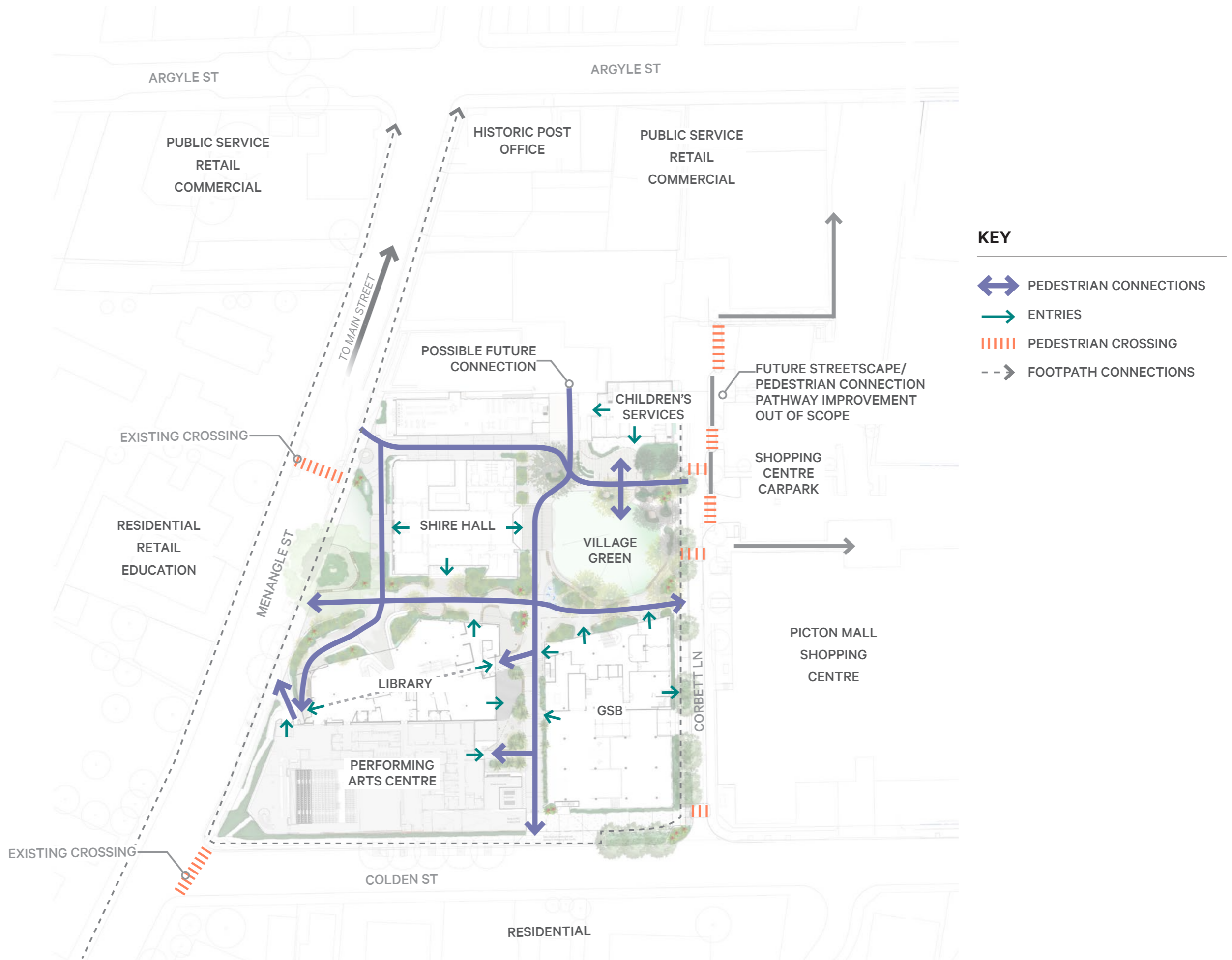
← - - - - - → Service vehicle access

▤ - - - - - ▤ Loading dock

SCALE 10m  NORTH



# PEDESTRIAN PATHWAYS & CONNECTIONS





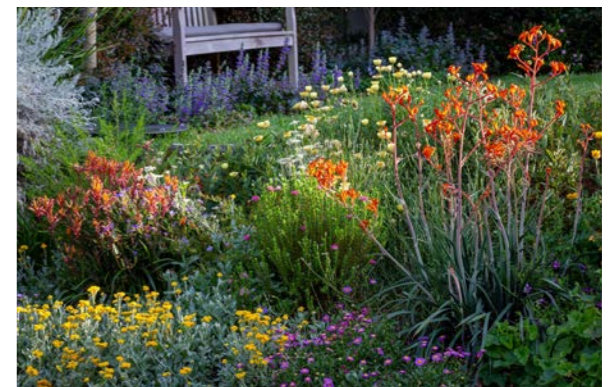
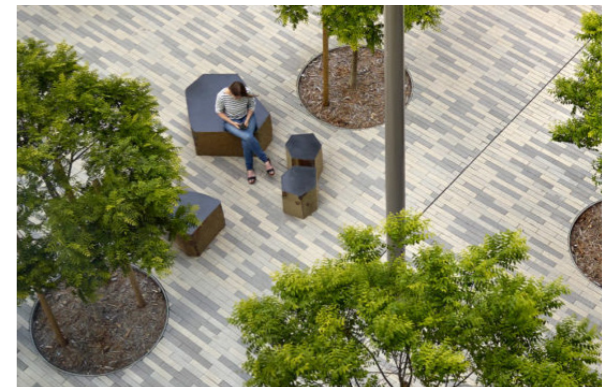
# CIVIC FORECOURT MENANGLE STREET FRONTAGE



## KEY

- 01 ARTS LANEWAY MARKER
- 02 SHIRE HALL FRONTAGE & FORMAL GARDENS
- 03 SITTING NOOK (UNDER EXISTING TREE)
- 04 GARDEN FORECOURT WITH TERRACE SEAT
- 05 ART SEAT + FOYER ENTRY
- 06 CUT SANDSTONE RAISED PLANTER EDGES WITH INTEGRATED SIGNAGE
- 07 FORMAL 'COTTAGE STYLE' PLANTING WITH MIXED NATIVE GROUNDCOVERS AND SHRUBS ASSOCIATED WITH SHIRE HALL HERITAGE FRONTAGE

SCALE 10m





# PERSPECTIVE MENANGLE STREET FRONTAGE



RENDER ARTIST: IVOLVE



# PERSPECTIVE SHIRE HALL



RENDER ARTIST: IVOLVE



# VILLAGE GREEN + CIVIC PLACE



## KEY

- 01 DRY RIVER CREEK BED
- 02 DISCOVERY PLAY GARDENS (WITH SEATING, BOULDERS, PLAY SCULPTURE)
- 03 OPEN LAWN, VILLAGE GREEN
- 04 MAIN WALKWAY. MULTIPURPOSE SPILL-OUT SPACE FROM BUILDING
- 05 TERRACE
- 06 PLAZA WITH MAJOR PUBLIC ART INSTALLATION
- 07 CAFE SPILL-OUT
- 08 STAGE + PERFORMANCE SPACE
- 09 LEARNING TREE. FLEXIBLE PLAZA SPACE ASSOCIATED WITH ARTS LANE AND LAWN
- 10 GARDEN FRINGE AND SEATING WALL TO SHIRE HALL ADJACENT TOILETS

SCALE 10m





# PERSPECTIVE VILLAGE GREEN



RENDER ARTIST: IVOLVE



# CIVIC LINKS



SCALE 10m

NORTH



## KEY

- 01 SITTING NOOK UNDER TREE
- 02 GARDEN FORECOURT + TERRACE SEAT WITH INDOOR/OUTDOOR LIBRARY INTERFACE
- 03 LIBRARY ENTRY
- 04 SEATING SPOTS + ART INTERFACE WITH LIBRARY
- 05 SHIRE HALL FRINGE PLANTING
- 06 CAFE 'SPILL-OUT'
- 07 LARGE COURTYARD PLANTERS AND 'PEBBLE SEATING'
- 08 PUNCHED SCREENING TO SERVICE AREA
- 09 GREEN FRINGE PLANTING TO CARPARK FACADE
- 10 CYCLE PARKING (WITH CHARGING + REPAIR STATION)




# PERSPECTIVE CIVIC LINK





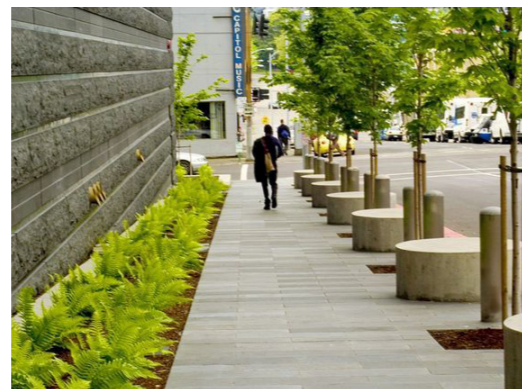
# STREETSCAPE CORBETT LANE, COLDEN STREET



SCALE 10m  NORTH

## KEY

- 01 OUTDOOR DISCOVERY PLAY GARDEN
- 02 NEW STREET TREES (SPECIES REQUIRED TO HAVE NARROW TRUNK AND HIGH CANOPY) FOOTPATHS AND DEFINED CROSSINGS
- 03 PLANTED BORDER TO BUILDING
- 04 LOW WALL + GARDENS (WSUD) . LARGE TREES.
- 05 TRUCK LOADING MANOEUVRE AREA
- 06 PRECINCT ENTRY MARKER INTEGRATED WITH BUILDING



POSSIBLE FUTURE CHARACTER OF CORBETT LANE CROSSING



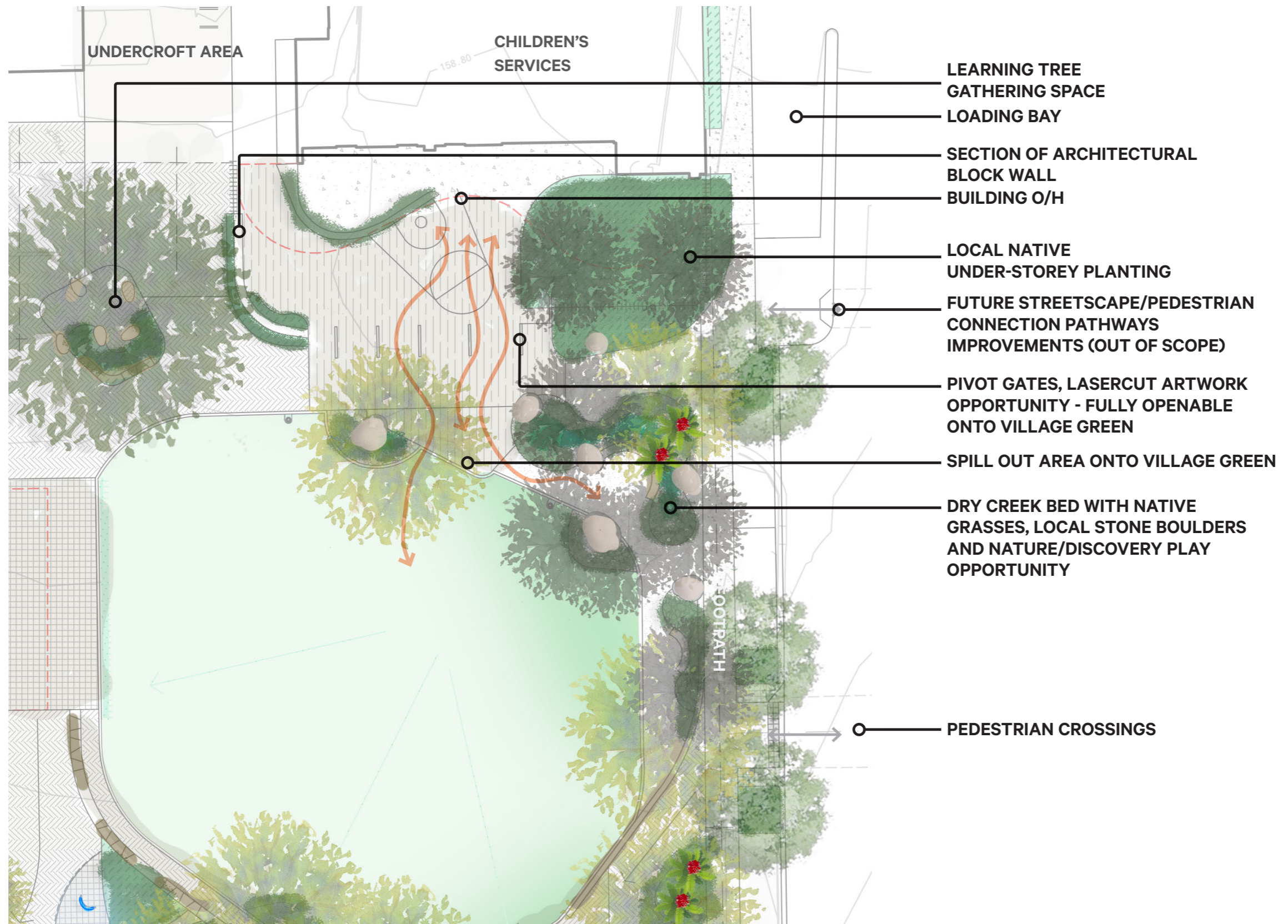


# PERSPECTIVE COLDEN STREET FRONTAGE





# CHILDREN'S SERVICES INTERFACE WITH VILLAGE GREEN





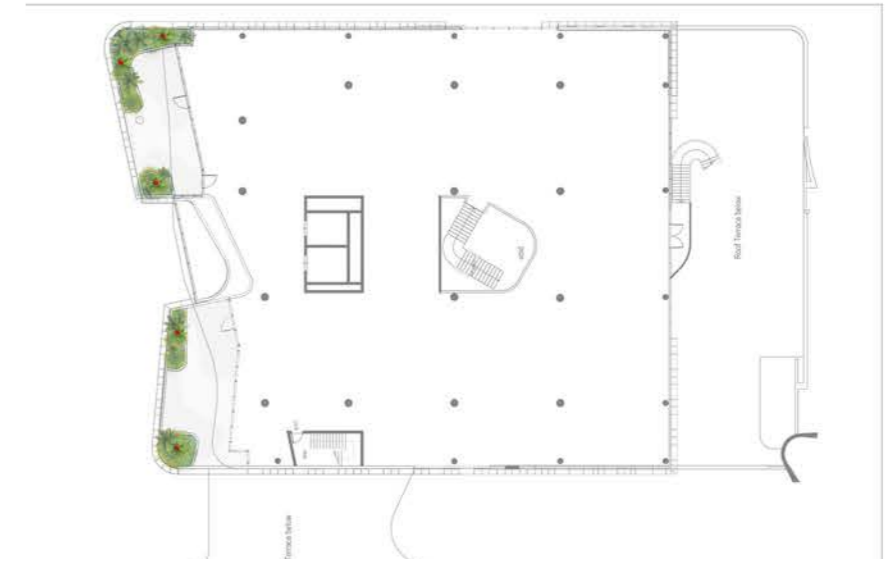
# ROOFDECKS LEVEL 2, 3, 4



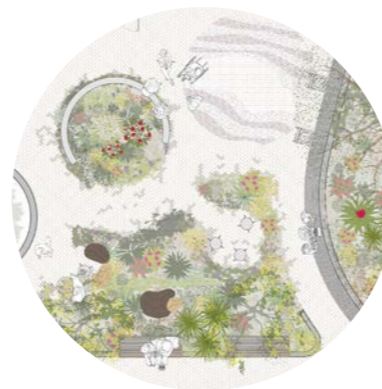
LEVEL 2



LEVEL 3



LEVEL 4



Bangawarra Roof Deck Illustration



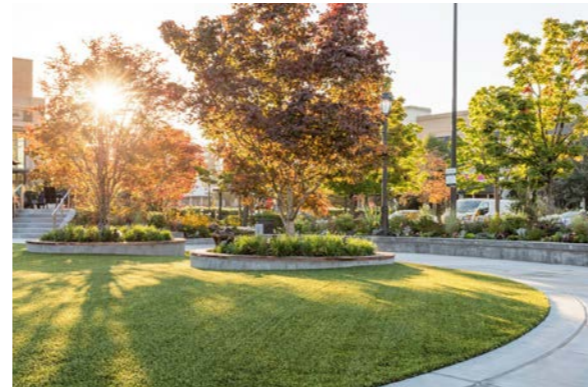
# PUBLIC REALM CHARACTER



OPEN FLEXIBLE LAWNS



LOCALLY SOURCED CUT SANDSTONE SEATING



LAWNS + GARDENS



SEATING IN GARDENS



LOCALLY SOURCED FEATURE STONE



LOCALLY SOURCED CLAY BRICK PAVING



TREE GRATES WITH ARTWORK



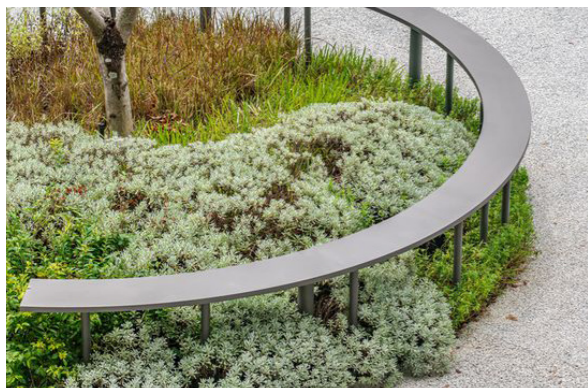
PLAY GARDENS



INFORMAL SEATING / PLAY BOULDERS



FENCING / SCREENING WITH OPPORTUNITY TO ENGAGE FIRST NATIONS ARTISTS



SEATING INTEGRATED WITH PLANTING BEDS



LIGHTING ARTWORK INSTALLATION



SCULPTURE ARTWORK WITH INTERACTIVE LIGHTING



GARDEN NOOK SEATING AREAS

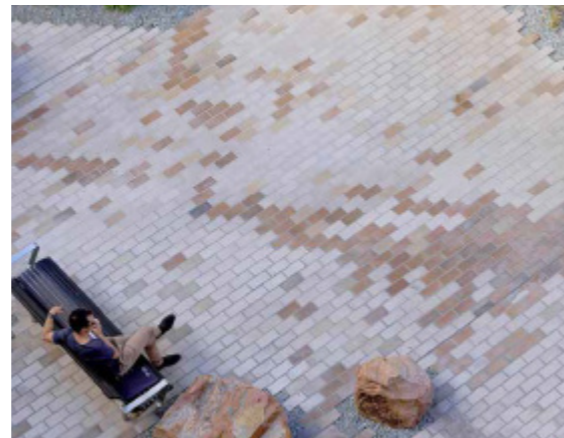


DRY RIVER CREEK BED

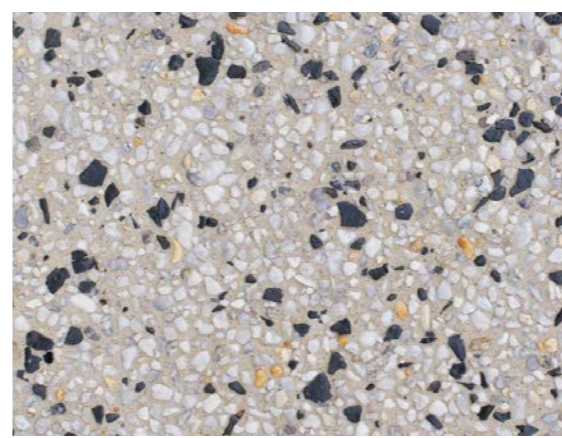


# PAVING AND SURFACES

Local clay brick paving



Exposed aggregate concrete paving



Paving inlays and etchings



Compacted granular sand



Dry river creek bed





# FURNITURE

- Furniture selected for enduring quality, are robust and low maintenance
- Public outdoor spaces are integrated through consistent materials and detailing
- Locally sourced materials are used where possible
- Variety of furniture catering to range of mobility and user needs
- Provision for 12 cycle racks within the public realm

Garden seating nook



Block seating amongst planting beds



Concrete seating integrated with timber



Seating integrated with planting beds



Option for seating with back rest



Option for seating with back rest



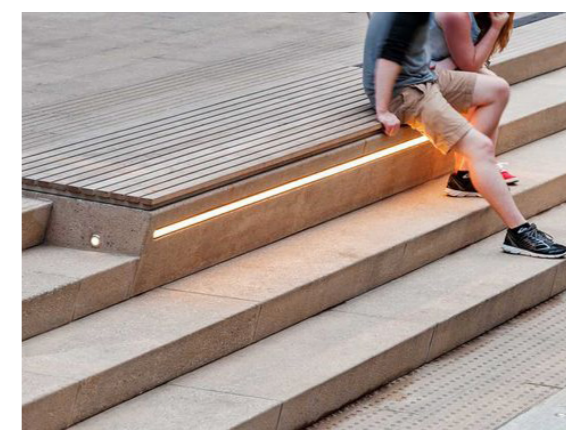
Cut local sandstone block seating



Informal pebble seating



Terraced seating with lighting

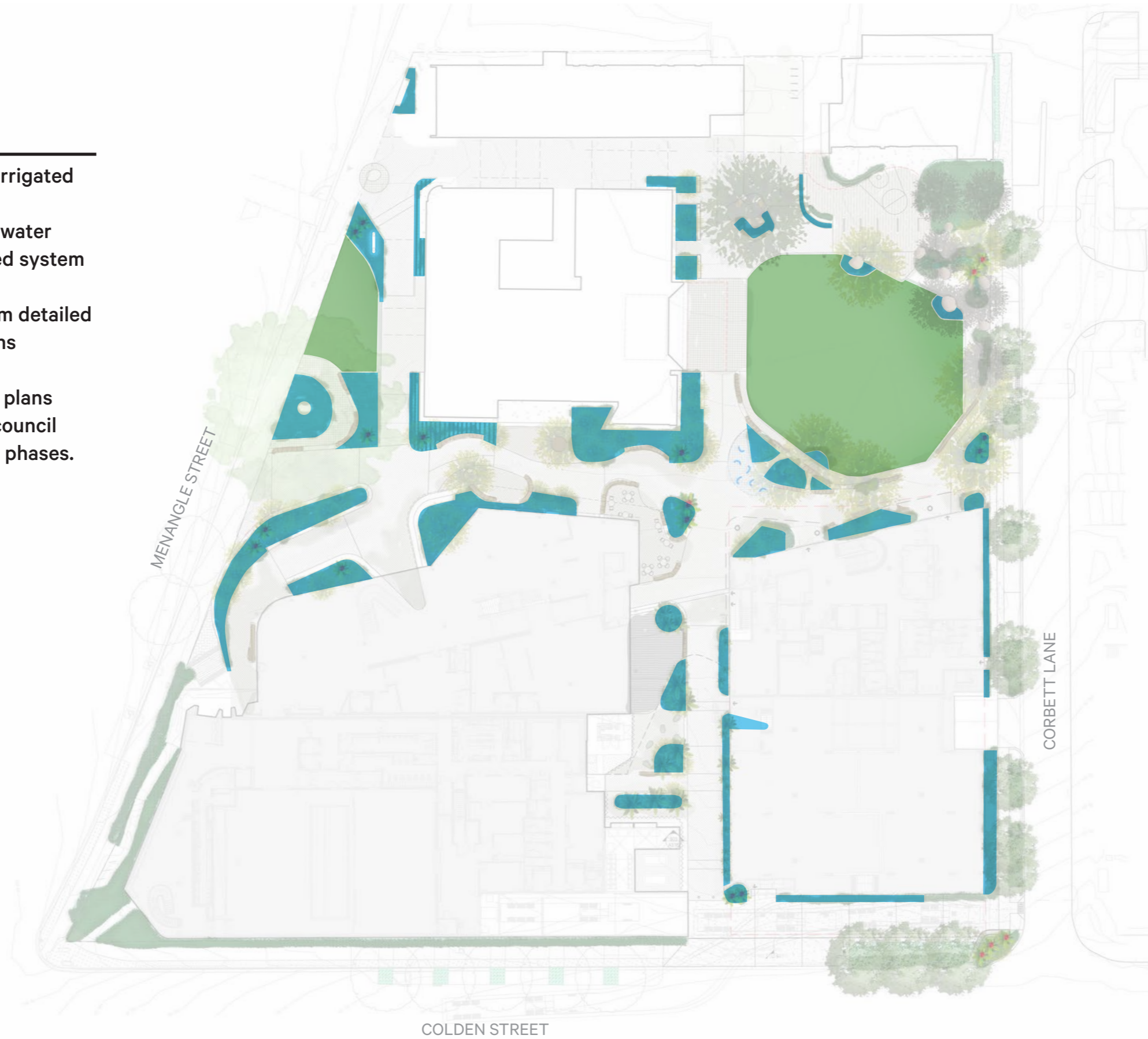




# PLANTING GARDEN BEDS

- All garden beds to be irrigated
- Supplemented by rain water controlled by monitored system
- Fully automated system detailed to suit varied conditions
- Final detailed planting plans to be developed with council during detailed design phases.

- Planting beds
- Lawn





# PLANTING PALETTE (PRELIMINARY)

## NATIVE TREES AND SHRUBS



*Eucalyptus pulverulenta*  
Silver-leaved Mountain Gum



*Hakea bakeriana*



*Hakea laurina*  
Pin-cushion hakea



*Eucalyptus macrocarpa*  
Mottlecah



*Banksia robar*  
Swamp banksia



*Banksia oblongifolia*  
Fern leaf banksia



*Callistemon Baroondah Station*  
Bottlebrush



*Backhousia citriodora*  
Lemon myrtle

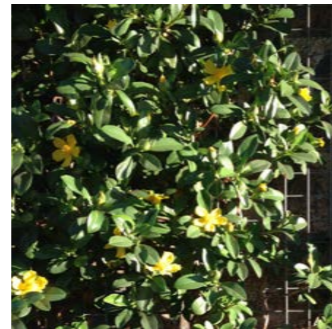
## GROUNDCOVERS AND SMALL SHRUBS



*Actinotus forsythii*  
Pink flannel flower



*Austromyrtus dulcis*  
Midgen berry



*Hibbertia scandens*  
Climbing Guinea Flower



*Acacia cultriformis*  
Knife-leaf wattle



*Brunonia australis*  
Blue pincushion



*Brachyscome multifida*  
Cut-leaf daisy



*Darwinia taxifolia*



*Dianella 'Little Jess'*  
Native Flax



*Correa pulchella*



*Chrysocephalum apiculatum*  
Yellow Buttons



*Eremophila glabra*  
Emu Bush

## RAIN GARDENS WSUD



*Joycea pallida*  
Redanther Wallaby Grass



*Lomandra longifolia*  
Mat Rush



*Themeda triandra*  
Kangaroo Grass



*Poa labillardieri*  
Common tussock grass



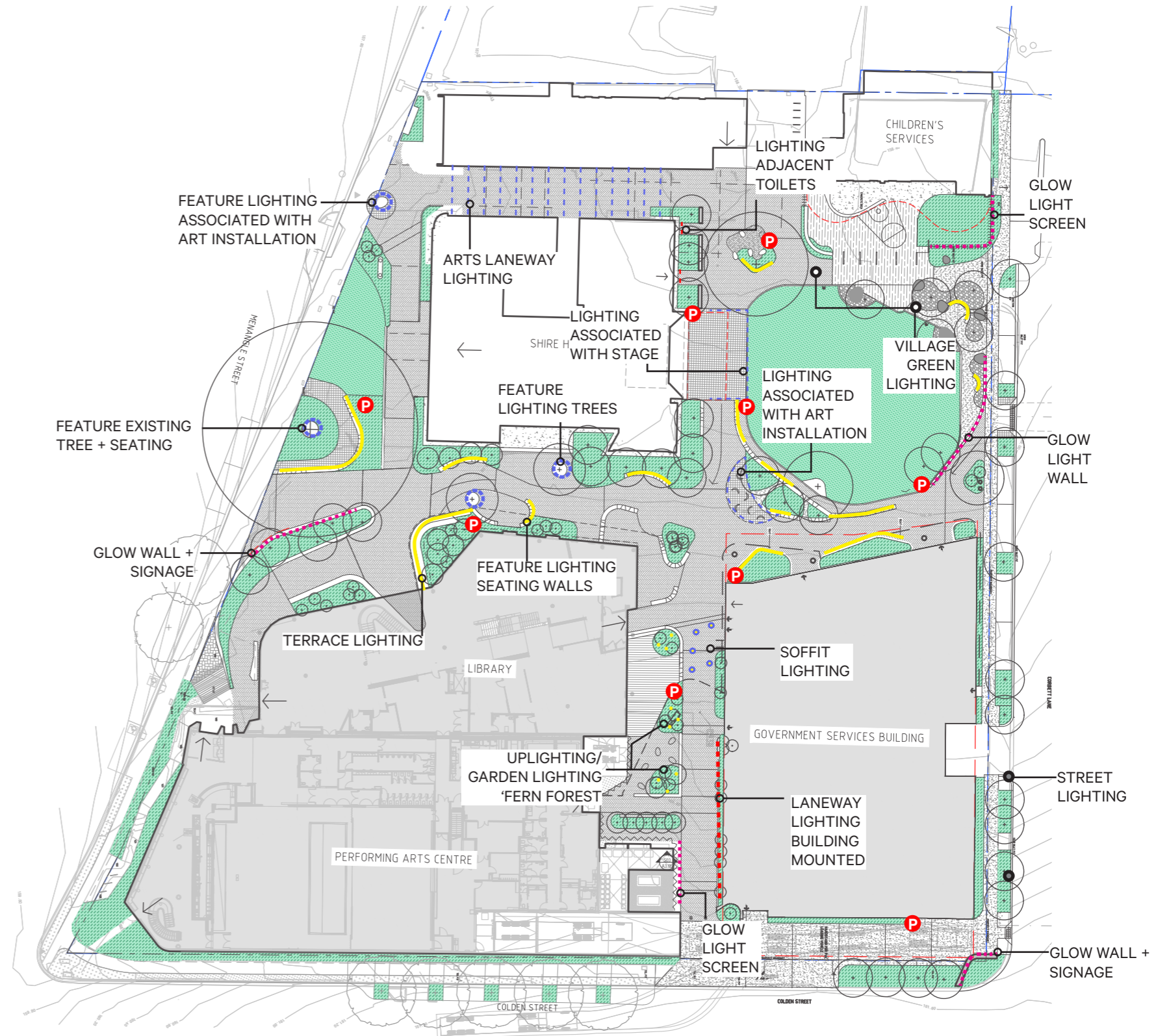
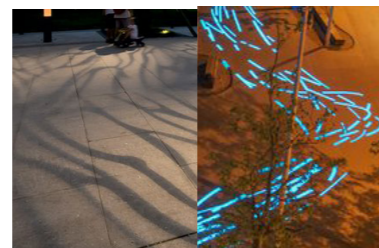
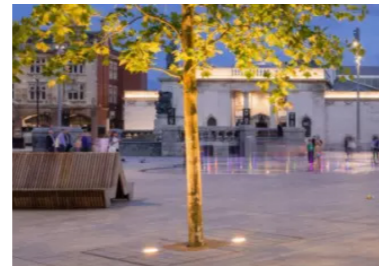
*Ficinia nodosa*  
Knobby club-rush



# LIGHTING

- Lighting contributes to an attractive civic precinct
- Increases the safety of the public realm
- Provides amenity for those working or visiting in the early mornings or evenings
- Lighting designates major site entries and pedestrian routes within the precinct
- Focuses on spaces that are more likely to be used for evening events and activities
- Used to assist wayfinding, defining major routes and highlighting key features of public art

**P** Power Outlet

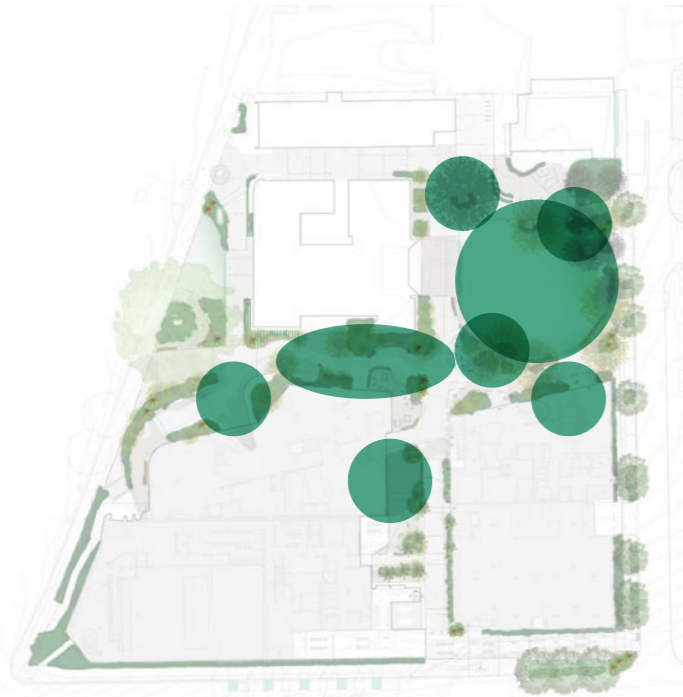






## Mana

A Gathering Place



### Series of Gathering Spaces

- Hierarchy of spaces to gather
- Various sizes/forms

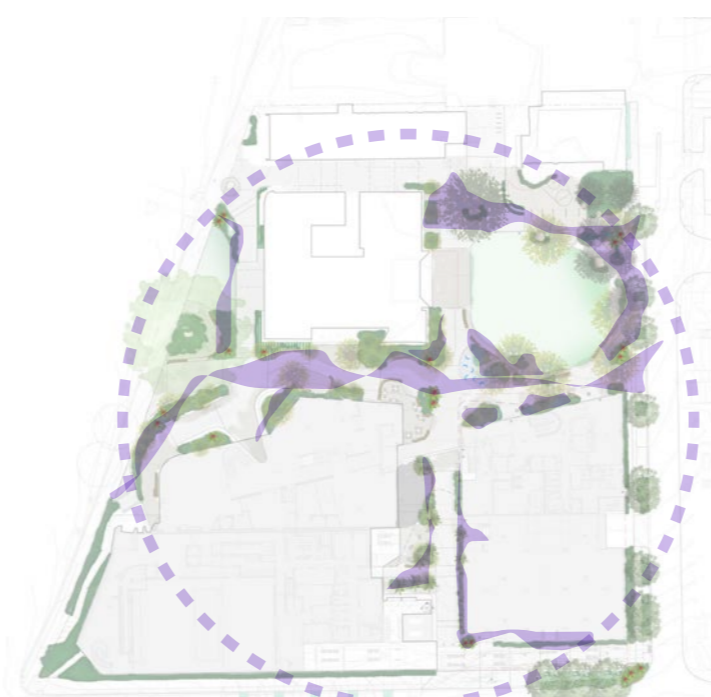
### Public Realm Spaces:

- Public
- Group or individual
- Gathering
- Meeting
- Rest + Relaxation
- Event/Activity
- Education/Teaching
- Discovery & Play
- Plants and natural resources to support cultural practices



## Marri

Country Provides



### Local + Native Planting

- Utilising endemic species
- Range of species relating to the six D'harawal seasons
- Selecting species used for food, medicine and cultural practices
- Planting design to define & articulate spaces
- Gynea lilies define the 'journey' - opportunities to expand concept to define precinct wayfinding strategy

### Materiality and Texture

- Utilising variety of materials & textures relating to the six microclimates outlined in Bangawarra's 'Connecting with Country Cultural Values' report



## Yandembo

Peaceful togetherness



### Story Telling

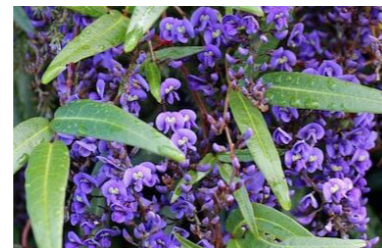
- Totems brought together by means of water - Lyrebird & Water Dragon
- Interpretive opportunities throughout the site & possible digital platforms + programmed activities
- Opportunities to interpret Mana and Marri values in the Public Realm such as 'caring beyond'
- Blurring of interior and exterior spaces



# CULTURAL LAYERS MARRI - COUNTRY PROVIDES

## NATIVE PLANTING

- Creating a planting palette that reflects the local endemic flora
- Range of species connecting to the six D’harawal seasons
- Various species that have cultural connections to food, medicine and practices
- Selecting plants that flower at various times, always something in flower
- Consideration of ecological associations and various microclimates throughout the precinct



## PLANTING BED TYPOLOGIES INCLUDING:

Grasslands >> Weaving

Fruiting Trees >> Food production + Medicine

Fern Forest >> Microclimates

Herbaceous >> Medicine

Trees >> Carving + Plant Dyes

## SPECIAL PLANTINGS

Special species located to mark precinct entries and special spaces





# CULTURAL LAYERS MARRI - PLANTING

## Preliminary list Seasonal

(Bangawarra - Cultural Planting Species)

	TALARATINGI	PARRA'DOWEE	BURRAN	MARRAI'GANG	BURRUGIN	WIRITJIRIBIN
<i>Acmena smithii</i> * - planted away from paved walkways due to fruit drop						
<i>Actinotus helianthi</i>						
<i>Acerifolia x populneus</i> cultivars						
<i>Dianella caerulea</i>						
<i>Doryanthes excelsa</i> * - planted in sheltered area to protect from frost						
<i>Lomandra longifolia</i>						
<i>Microseris lanceolata</i>						
<i>Persoonia</i>						
<i>Telopea speciosissima</i>						
<i>Viola banksii</i>						
<i>Xanthorrhoea johnsonii</i>						
						

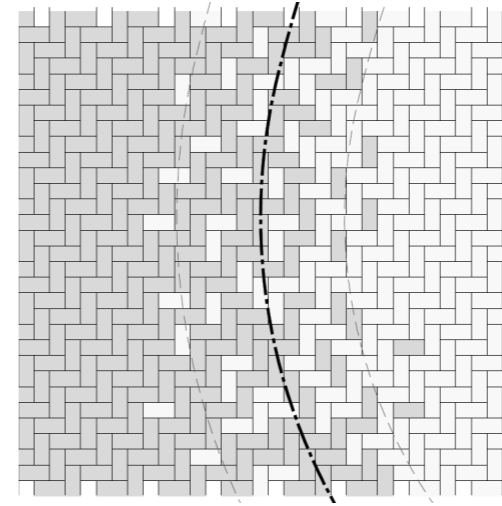
\*FINAL LOCATIONS TO BE DETERMINED DURING DETAIL DESIGN TO SUIT CONSTRUCTION STAGING AND SITE MICRO-CLIMATES



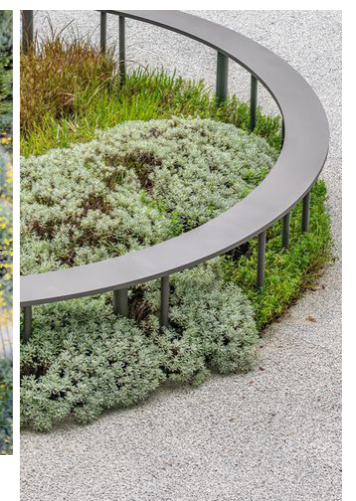
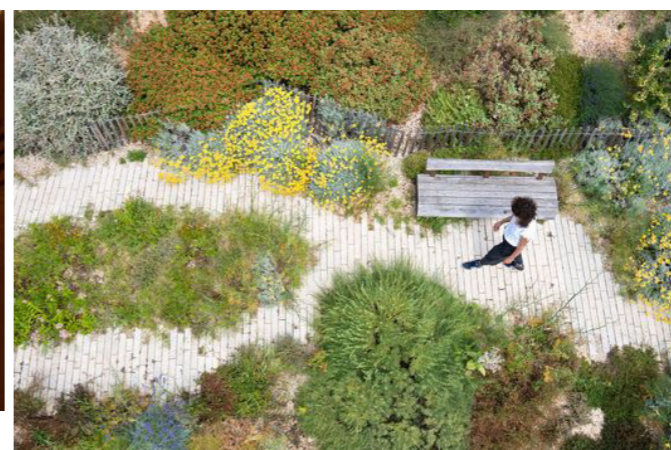
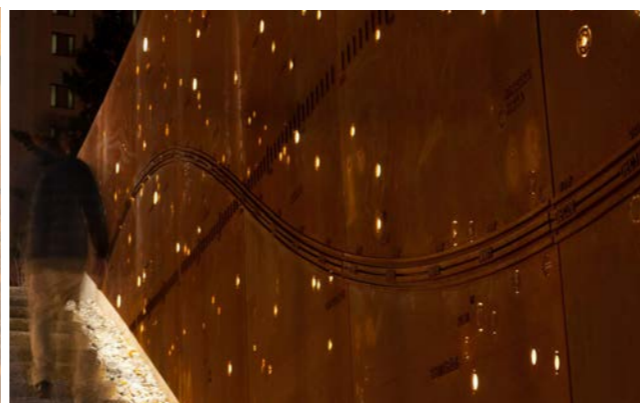
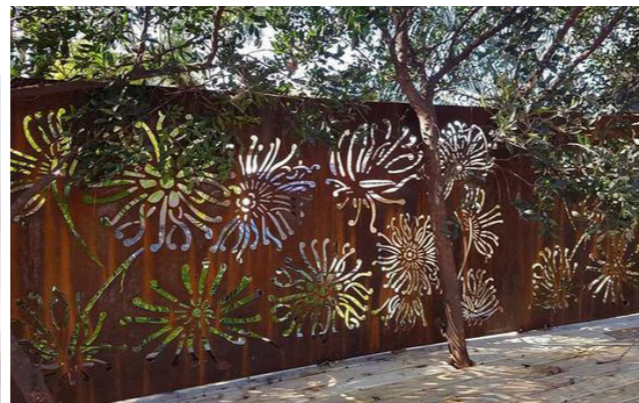
# CULTURAL LAYERS MATERIALITY + TEXTURE

Local and culturally sensitive materials to relate to the six microclimates (outlined in Bangawarra's 'Connecting with Country Cultural Values' report):

- *Big Sky Country Views* >> *Open view lines to sky (consider outdoor lighting that doesn't affect ability to see the night sky)*
- *Water Pooling + Evaporating* >> *Varied textured paving, rain garden WSUD opportunity*
- *Sand and Soil* >> *Mulched garden beds, granulitic sand pathways*
- *Natural stone, Natural materials thermal mass* >> *Seating walls, local clay brick paving*
- *Shelter* >> *Trees, enclosure through creation of varies spaces, integration of buildings and*

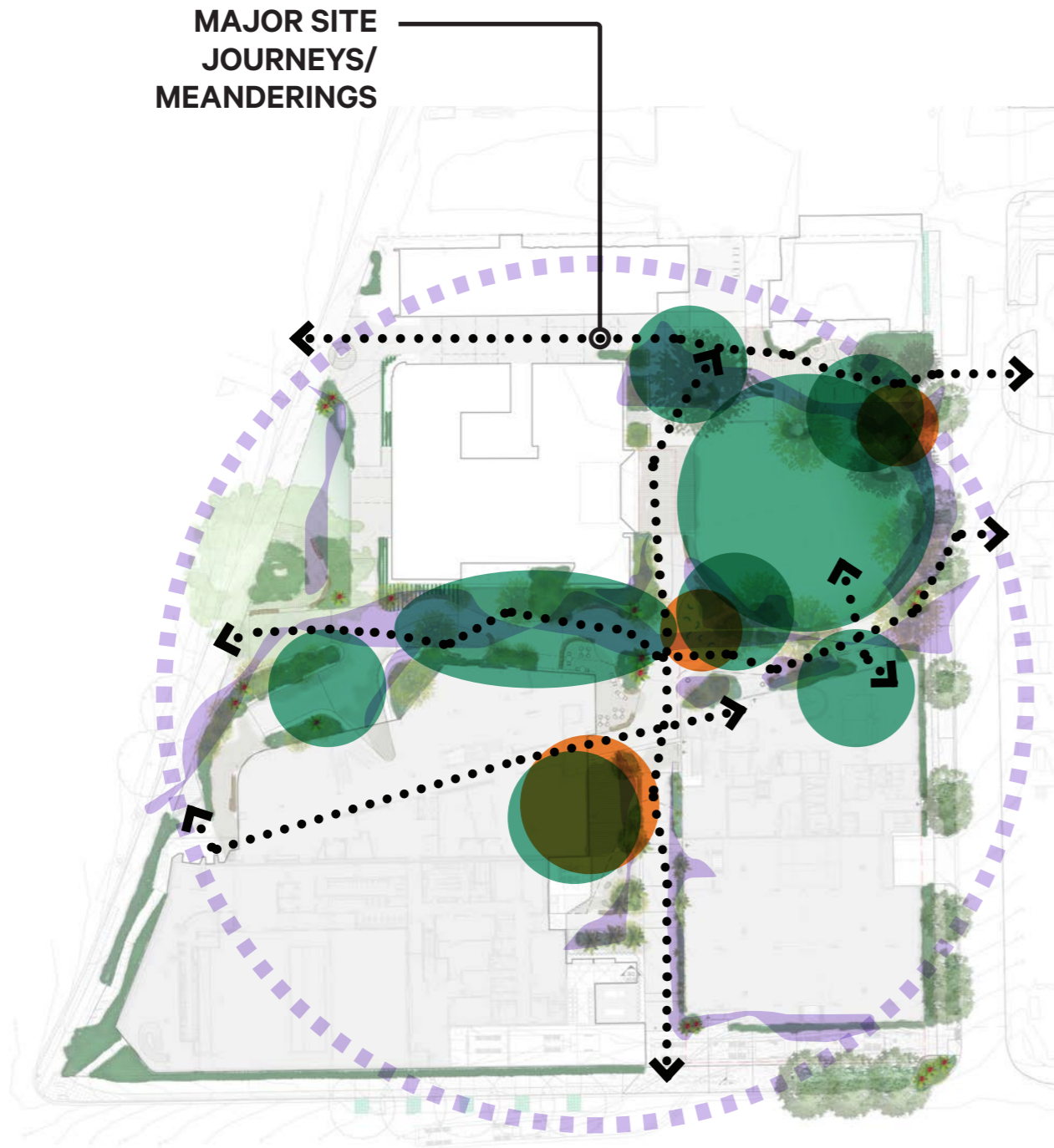


qualities





# CULTURAL LAYERS PRECINCT PLAN OVERLAY



**Mana**

A Gathering Place



**Marri**

Country Provides



**Yandembo**

Peaceful togetherness





# PUBLIC ART

LINKING PROJECTS	
ARTS LANE	CIVIC LINK
CIVIC FORECOURT	VILLAGE GREEN
EAST WEST LINK	INTERNAL SPACES



## VILLAGE GREEN:

- VG1 Yarning circle (Sculptural artwork)
- VG2 Miniture fauna sculptures

## EAST- WEST LINK:

- EW1 Cantenary lighting (Overhead Link)
- EW2 Digital art wall (Green Room)

## CIVIC LINK:

- CL1 Integrated lighting - illuminate soffit
- CL2 Living art nature wall
- CL3 Carved stone sculpture
- CL4 Library window object display

## CIVIC FORECOURT:

- CF1 Integrate art into seating
- CF2 Illuminate feature tree

## ARTS LANE (out of scope)

- The Canvas
- 'Bloom'
- Welcome to Arts Lane
- To the future

## INTERNAL SPACES

- IS1 Theatre lobby - suspended art
- IS2 Theatre lobby - carpet inset
- IS3 Library lobby - suspended art
- IS4 GSB lobby - suspended art
- IS5 Community Arts Building - suspended art





oxigen